

**NOTES:**

1) FT LADDER ACCESS IN ACCORDANCE WITH CURRENT STATUTORY REGULATIONS AND TO SUIT ON-SITE CONDITIONS.

2) ALL BEAMS ARE TO BE ERECTED/INSTALLED AS PER MANUFACTURERS ERECTION MANUAL/TECHNICAL SPECIFICATIONS.

3) ANY STANDARDS/TIE END FITTINGS THAT IS IN PROXIMITY TO THE GENERAL PUBLIC IS TO HAVE FOAM PADDING/PLASTIC END CAP/TAPE COVER TO PREVENT ANY DAMAGE TO PERSONS/CLOTHING.

4) MAXIMUM IMPOSED LOAD ON THE SCAFFOLD IS NOT TO EXCEED 2.0kN/M<sup>2</sup>. MAXIMUM IMPOSED LOAD ON THE INSIDE BOARDS IS NOT TO EXCEED 0.75kN/M<sup>2</sup>. ONLY 1 No. LIFT MAY BE USED AT ANY ONE TIME.

5) THE SCAFFOLD IS TO BE ERECTED AND DISMANTLED IN ACCORDANCE WITH N.A.S.C. GUIDANCE NOTE SCS4-100.

**GENERAL NOTES:**

A) The drawing is confidential and the exclusive property of Tilson Scaffolding Limited. No unauthorised use, copy or disclosure is to be made and is to be returned upon request.

B) Construct in full compliance with BS EN 12811-1 (TC2005) unless noted otherwise.

C) Scaffold built from tubular materials and fittings conforming to BS 1399 - 1992 or type A tube to BS EN 10255. All steel must be in various conditions.

D) Scaffold built with load bearing fittings, except intermediate between beam platform level and boards fixed with non-load bearing fittings.

E) All services, plant, equipment and materials supplied are subject to our conditions of Contract, Hire or Sales as applicable.

F) The drawing has been prepared from details supplied to us by the erector/client who should check that we have correctly interpreted the requirements and that all loading, dimensions, details, erection and striking sequences are correct and practical. No attention is to be drawn to any make without prior reference.

G) The client is to prepare and ensure that any foundations/supports are suitable for supporting the loads imposed upon it by our scaffold including a working load.

H) No shoring whatsoever, unless already shown, should be added to the scaffold without prior reference.

I) It is the responsibility of the client/erector to ensure the adequate loading for tying the scaffold to the building or structure and to ensure the stability of the structure is capable of accommodating the loads applied to it by the scaffold and its working load.

J) No ties or braces are to be removed or any modifications to be made to the scaffold without prior reference.

K) The erector/client is to design, supply and fix all necessary safety equipment including but not limited to: shoring, timber, beams, steel jacks and to ensure that such safety equipment is used in accordance with the manufacturer's instructions.

L) The erector/client will be responsible for setting out and final levelling of scaffolding or similar equipment used as a system support.

M) All dimensions are as stated or as calculated. Drawings must not be scaled.

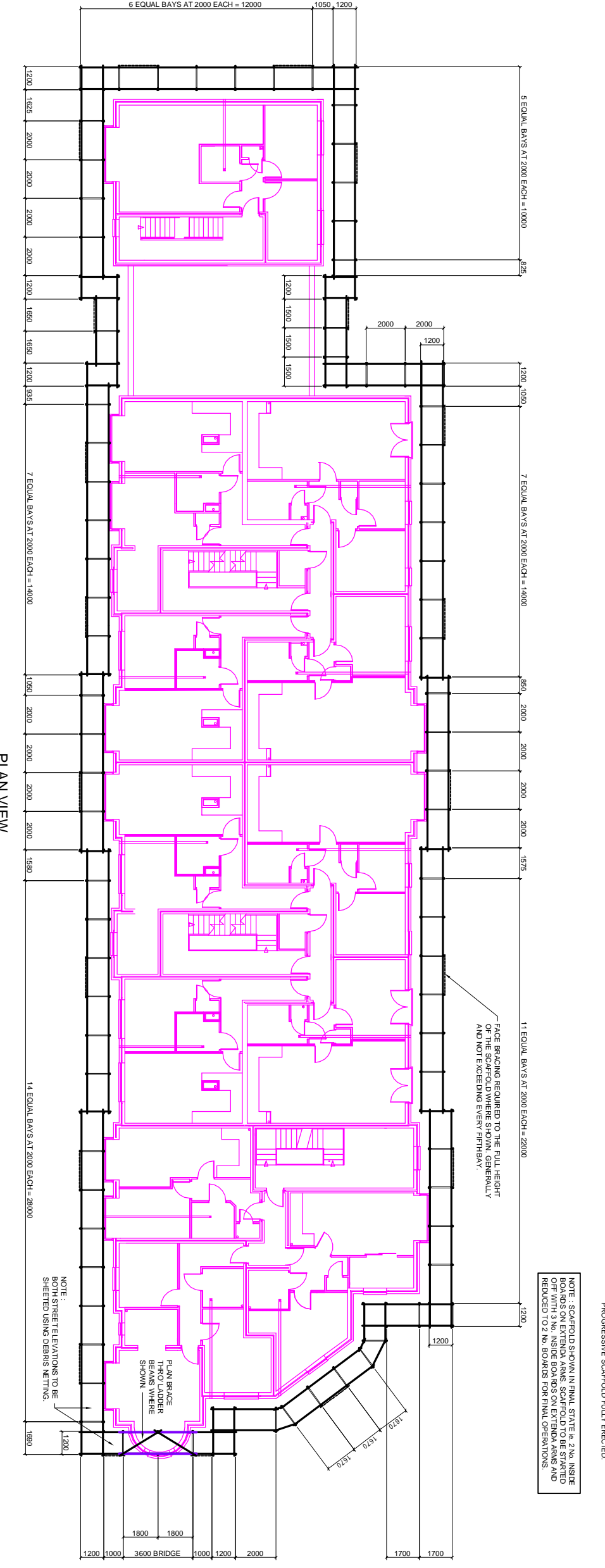
N) This drawing has been prepared on the assumption that all loads will be applied evenly to the tubes unless specifically stated.

O) ONLY 1 No. LIFT MAY BE USED AT ANY ONE TIME.

P) MAXIMUM IMPOSED LOAD ON THE SCAFFOLD IS NOT TO EXCEED 2.0kN/M<sup>2</sup>.

Q) MAXIMUM IMPOSED LOAD ON THE INSIDE BOARDS IS NOT TO EXCEED 0.75kN/M<sup>2</sup>.

**NOTE:** SCAFFOLD SHOWN IN FINAL STATE IN 2 No. INSIDE BOARDS/STAYING AREAS. SCAFFOLD TO BE STARTED FROM THE INSIDE BOARDS/STAYING AREAS AND REDUCED TO 2 No. BOARDS FOR FINAL OPERATIONS.



**WORKING DRAWING**

Rev.	Description	Changed	Checked	Date
P1	ORIGINAL DRAWING PROVISIONAL STATUS	LAM	ARR	19/12/07
P2	AMENDMENTS UPON INTERNAL CHECK PROVISIONAL STATUS	LAM	ARR	03/01/08
A	ISSUED AS WORKING DRAWING	LAM	ARR	07/01/08

**CLIENT:** WESTBRIDGE HOMES LTD.

**PROJECT:** DELTA MILL, BEVERLEY

**DRAWN BY:** L.J. MAYER

**CHECKED BY:** A.H. RICHARDS

**APPROVED BY:**

**SCALE:** 1:100

**DRAWING NO:** TS 7963

**REV:** B

**TILSON SCAFFOLDING LIMITED**

Tilson Scaffolding Limited  
Unit B  
Lonsborough Street  
Hull DO  
Hull HU1 1DA

Telephone: 01482 224774  
Fax: 01482 224774  
Email: info@tilson.co.uk  
Web: www.tilson.co.uk

ANY QUERIES REGARDING THIS DRAWING PLEASE CONTACT  
M.C. Stephenson Tel.: 01482 224774

INDEPENDENT ACCESS SCAFFOLD TO  
DELTA MILL, BEVERLEY

**ALWYN RICHARDS**  
TEMPORARY WORKS DESIGN

A. BBC, Spalding Road  
Culverthorpe, Beverley,  
S72 8PP  
T: (01283) 719488  
F: (01283) 711153  
E: general@alwynrichards.com  
W: www.alwynrichards.com